

Container House Catalog

集装箱房·产品图集



Space capsule

太空舱

勘测、定制、施工、售后一体化服务体系

Integrated service system for survey, customization, construction, and after-sales

①太空舱：规格：按需定制；材质：轻钢结构、航空级铝合金。

太空舱移动房屋是由酷感十足的白色航空铝制外壳，搭配双层全景钢化玻璃，超轻视野无遮挡，全景采光一览无余，民宿内部全屋智能化控制系统，一键切换恒温控制和电动窗帘天窗体验，整体精装修交付，270度的全景落地窗，还带有一个超大露台，还可以选择配置投影仪、电地暖、中央空调等设备，现场安装只需两个小时，不限地形，不限地基，这就是最近火出圈的太空舱移动房屋。

太空舱被广泛应用于旅游度假村、房车营地、创意园、商铺等领域，为特色小镇铺设生态旅游、移动地产、移动零售、打造旅居商一体的“移动商机”，自由组合可以灵活应用在不同的文旅项目需求。

公司生产的太空舱主要特点有：

- 一、太空舱自带一体式生化系统和光伏系统，达到节能减排的标准，解决污水处理问题；
- 二、太空舱内部配套智能家居，从开锁进门，到小小灯泡都采用智能超控，非常的方便；
- 三、太空舱是移动式的，不破坏环境，不受地域限制；
- 四、太空舱的外观很独特，很有个性，很有吸引力，科技感十足；
- 五、太空舱采用食品级树脂及玻璃纤维的玻璃钢成型，强度高，耐寒耐热，使用寿命长。

品种齐全 货源充足 做工精细 质优价廉

Space capsule: Specification: on demand; Material: light steel structure, aviation grade aluminum alloy.

The capsule is widely used in tourism resorts, caravan camps, creative parks, stores and other fields, paving the way for eco-tourism, mobile real estate, mobile retail, and creating "mobile business opportunities" for the integration of travel, residence and business in a featured town, and the free combination of which can be flexibly applied to different cultural and tourism project needs.

The main features of the space capsule produced by the company are:

First, the space capsule comes with an integrated biochemical system and photovoltaic system, to achieve the standard of energy saving and emission reduction, to solve the problem of sewage treatment;

Second, the space capsule internal supporting intelligent home, from unlocking the door, to a small light bulb are used intelligent ultra-control, very convenient;

Third, the space capsule is mobile, does not damage the environment, not subject to geographical restrictions;

Fourth, the appearance of the space capsule is very unique, very personalized, very attractive, full of sense of technology;

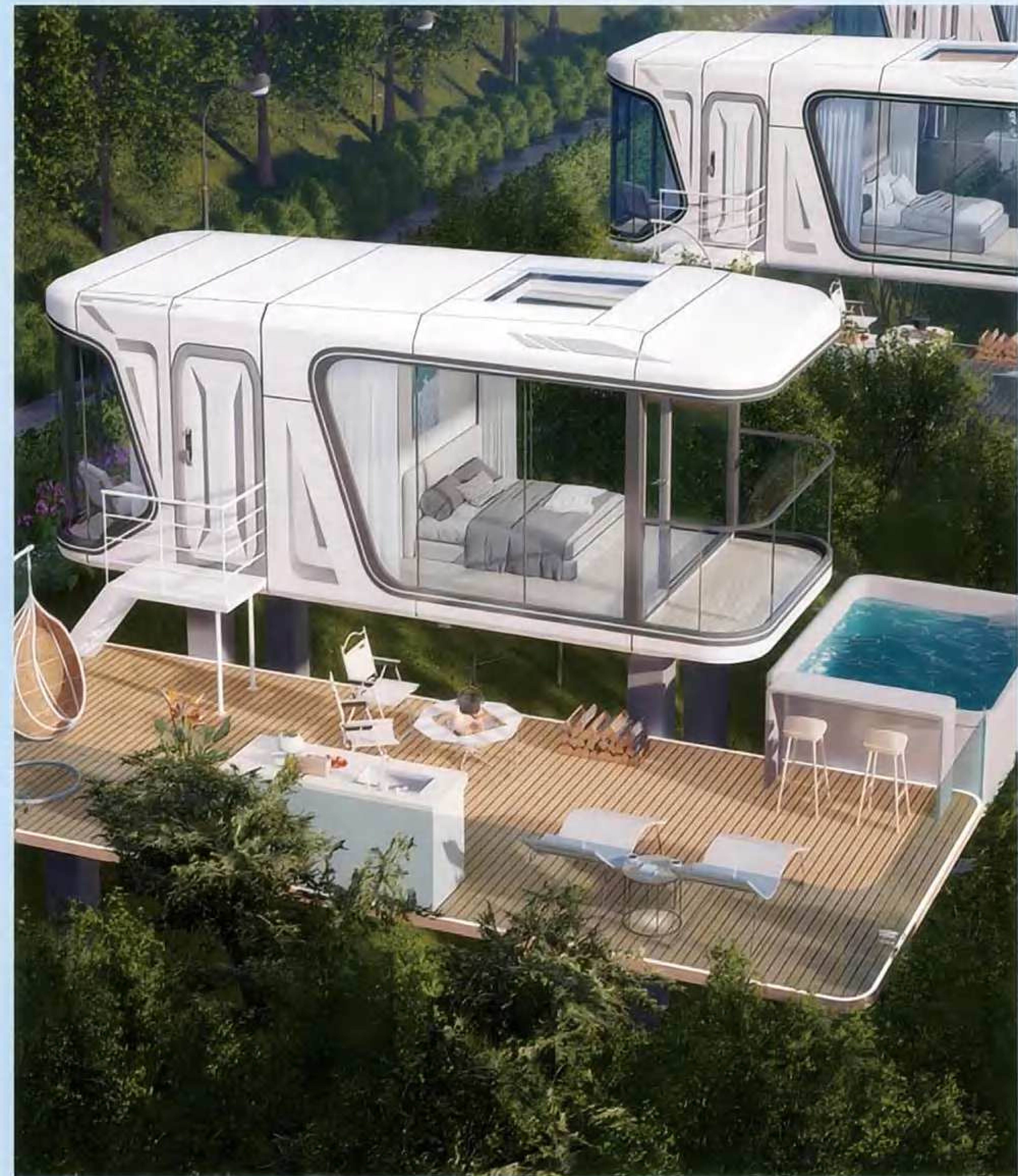
Fifth, the capsule is molded with fiberglass of food-grade resin and glass fiber, high strength, cold and heat resistance, long service life.







案例分享





Apple Cabin 苹果舱

勘测、定制、施工、售后一体化服务体系

Integrated service system for survey, customization, construction, and after-sales

①苹果舱：规格：按需定制；材质：轻钢结构、铝合金。

装配式可移动“苹果舱”，因其正面外形酷似“苹果手机”而得名。单个苹果舱一个规格3米宽度，长度3米、6米、9米、12米，可以N个排列组合叠加组合。广泛应用民宿酒店、网红餐厅、移动展厅、健身房、图书馆、快闪店等场景。

苹果舱被广泛应用于旅游度假村、房车营地、创意园、商铺等领域，为特色小镇铺设生态旅游、移动地产、移动零售、打造旅居商一体的“移动商机”，自由组合可以灵活应用在不同的文旅项目需求。功能齐全、占地面积小，减少了空间限制。

公司生产的苹果舱主要特点有：

- 一、工厂装配出厂，结构强度高，节约成本；
- 二、坚固耐用，具有很强的抗风抗震能力；
- 三、整体可移动，移动便捷；
- 四、外型美观，低调奢华，采用绿色标准材料环保，应用场景广。

品种齐全 货源充足 做工精细 质优价廉

Apple Cabin: Specification: customized; Material: light steel structure, aluminum alloy.

Assembled movable "apple cabin", because of its front appearance is like "apple cell phone" and named. A single apple cabin has a specification of 3 meters in width and 3 meters, 6 meters, 9 meters and 12 meters in length, which can be stacked in N combinations. Widely used in bed and breakfast hotels, net red restaurant, mobile showroom, gym, library, flash store and other scenes.

Apple Cottage are widely used in tourism resorts, RV camps, creative parks, stores and other fields, paving the way for eco-tourism, mobile real estate, mobile retail, and creating travel, residence and business as one of the "mobile business opportunities" for special towns, and the free combinations can be flexibly applied to different cultural and tourism project needs. Full-featured, small footprint, reducing space constraints.

The main features of the Apple Cottage produced by the company are:

- I, factory assembly, high structural strength, cost savings;
- II, sturdy and durable, with strong wind and earthquake resistance;
- III, the whole can be moved, easy to move;
- IV, beautiful appearance, low-key luxury, the use of green standard materials environmental protection, the application of a wide range of scenes.





案例分享



案例分享



Mobile Container Shop

网红集装箱

勘测、定制、施工、售后一体化服务体系

Integrated service system for survey, customization, construction, and after-sales

①网红集装箱：规格：按需定制；材质：轻钢结构。

网红集装箱是一个模块化的组件，它可以通过箱体的堆叠、拼接、错位等组合来构建。各种形状会给外观带来很大的视觉冲击。此外，具有个性外观的喷漆绘画更符合当代年轻人的审美追求。

集装箱是一个模块化的组件，它可以通过箱体的堆叠、拼接、错位等组合来构建。各种形状会给外观带来很大的视觉冲击。此外，具有个性外观的喷漆绘画更符合当代年轻人的审美追求。

集装箱作为商业街可有效缩短施工周期，比传统建设快85%以上。按照设计图纸划分门窗，然后切割位置。由于大部分集装箱都是现成的，这在一定程度上缩短了施工周期。集装箱改造过程中无建筑垃圾和噪音污染。装修过程中使用的保温防水材料也是环保材料，集装箱店可以回收利用。

公司生产的苹果舱主要特点有：

- 一、工厂装配出厂，结构强度高，节约成本，施工周期短；
- 二、坚固耐用，具有很强的抗风抗震能力；
- 三、整体可移动，移动便捷；
- 四、外型美观，低调奢华，采用绿色标准材料环保，应用场景广。

品种齐全 货源充足 做工精细 质优价廉

Mobile Container Shop

Mobile Container Shop: Specification: customized; Material: light steel structure.

Mobile Container Shop: is a modular component which can be constructed by combinations of stacking, splicing and misalignment of boxes. Various shapes will bring great visual impact to the appearance. In addition, spray painting with personalized appearance is more in line with the aesthetic pursuit of contemporary young people.

Container is a modular component, which can be constructed through the combination of stacking, splicing, and misalignment of boxes. Various shapes will bring great visual impact to the appearance. In addition, spray painting with personalized appearance is more in line with the aesthetic pursuit of contemporary young people.

Container as a commercial street can effectively shorten the construction cycle, more than 85% faster than traditional construction. The doors and windows are divided according to the design drawings and then cut into position. Since most of the containers are ready-made, this shortens the construction cycle to a certain extent. No construction waste and noise pollution during container remodeling. The insulation and waterproof materials used in the renovation process are also environmentally friendly, and the container store can be recycled.



案例分享







20 foot expansion room

20尺拓展房

勘测、定制、施工、售后一体化服务体系

Integrated service system for survey, customization, construction, and after-sales

①20尺拓展房：展开：宽6300*长5900*高2480mm

内部：宽6140*长5640*高2260mm

折叠：宽2200*长5900*高2480mm

出口20尺拓展房，展开后宽度6410mm，长度5900mm，高度2480mm，内部可做多种功能区，卧室、客厅、卫生间、厨房等等，可做办公、居家、起居、公寓等等使用。安装快速、移动方便、结构合理、牢固耐用，深受用户好评！外部墙板有多种颜色、花纹、材质可选！

公司生产的折叠箱房，箱式房主要特点有：

一、可扩展式的集装箱房屋，安装简单、运输方便。 超大空间：展开后的室内空间接近是闭合状态时的3倍。
运输方便：闭合状态下所占空间少，20尺扩展房一个40高柜可以装载2套，40尺扩展房一个40高柜可以装载1套。

二、坚固耐用，全部由钢质组成，具有很强的抗震、抗变形能力；

三、密封性能好，严格的制造工艺使这种活动房具有很好水密性；

四、超大空间：展开后的室内空间接近是闭合状态时的3倍。

五、拆装方便，性能优越，稳定牢固，防震性能好，防水防火防腐，重量轻。房屋为整体结构，内有框架，墙体为岩棉复合板，可整体迁移，使用寿命可达20年以上等。

品种齐全 货源充足 做工精细 质优价廉

① 20 foot expansion room: unfolded: W6300 * L5900 * H2480mm

Internal: W6140*L5640*H2260mm

Folding: W2200 * L5900 * H2480mm

The exit is a 20 foot expansion room, with a width of 6410mm, a length of 5900mm, and a height of 2480mm. The interior can be used as various functional areas, including bedrooms, living rooms, and bathrooms.

Kitchen, etc., can be used for office, home, living, apartment, etc. Fast installation, convenient movement, reasonable structure, sturdy and durable, highly praised by users!

There are various colors, patterns, and materials available for external wall panels!

The folding box houses produced by the company have the following main characteristics:

1、 An expandable container house with simple installation and convenient transportation. Extra large space: The expanded indoor space is nearly three times that of the closed state.

Convenient transportation: In a closed state, it takes up less space. A 40 high cabinet in a 20 foot expansion room can accommodate 2 sets, while a 40 high cabinet in a 40 foot expansion room can accommodate 1 set.

2、 Durable and sturdy, all made of steel, with strong seismic and deformation resistance;

3、 The sealing performance is good, and the strict manufacturing process makes this activity room have good water tightness;

4、 Extra large space: The expanded indoor space is nearly three times that of the closed state.

5、 Convenient disassembly and assembly, superior performance, stability and firmness, good shock resistance, waterproof, fireproof and anti-corrosion, and light weight. The house is a complete structure with a frame and walls inside.

It is a stone wool composite board that can be migrated as a whole and has a service life of over 20 years.





案例分享









High end packaging box room

高端打包箱房

勘测、定制、施工、售后一体化服务体系

Integrated service system for survey, customization, construction, and after-sales

①打包箱房：规格：6055mm*2990mm*2896mm；材质：石岩棉。

②快拼箱房：规格：按需定做。

打包箱房主要为房屋建筑、地铁、市政工程、铁路、公路等基建施工工地提供住人集装箱、打包箱活动房、打包箱房屋、箱式活动房，快拼箱房，箱房卫生间，可吊装箱房的设计、制造、运输、销售、等服务，并为施工工地提供岗亭、卫生间、铁床、空调等配套设备的销售服务。

公司生产的打包箱房，箱式房主要特点有：

一、运输方便，尤其适合经常更换施工点的单位；

二、坚固耐用，全部由钢质组成，具有很强的抗震、抗变形能力；

三、密封性能好，严格的制造工艺使这种活动房具有很好水密性；

四、箱房基于标准钢材底盘之上，可以衍生出许多组合空间。如会议室、宿舍、厨房、卫生间等。标准的宽度在2990mm，高度2896mm，长度6055mm，也可定制其他尺寸。

五、拆装方便，性能优越，稳定牢固，防震性能好，防水防火防腐，重量轻。房屋为整体结构，内有框架，墙体为石岩棉复合板，可整体迁移，使用寿命可达20年以上等。

品种齐全 货源充足 做工精细 质优价廉

① Packaging box room: specification: 6055mm*2990mm*2896mm; Material: Rock wool.

② LCL room: specifications: customized according to needs.

Packaging box houses mainly provide residential containers, packaging box activity rooms, and packaging for infrastructure construction sites such as housing construction, subways, municipal engineering, railways, highways, etc

Design, manufacturing, transportation, sales, and other services for box houses, box type activity rooms, fast consolidation rooms, box room toilets, and lifting box rooms, and provide services for construction sites

Sales services for supporting equipment such as sentries, bathrooms, iron beds, air conditioning, etc.

The main characteristics of the packaging box room produced by the company include:

1、 Convenient transportation, especially suitable for units that frequently change construction sites;

2、 Durable and sturdy, all made of steel, with strong seismic and deformation resistance;

3、 The sealing performance is good, and the strict manufacturing process makes this activity room have good water tightness;

4、 The box house is based on a standard steel chassis and can derive many combination spaces. Such as meeting rooms, dormitories, kitchens, bathrooms, etc. The standard width is

2990mm, height 2896mm, length 6055mm, and other sizes can also be customized.

5、 Convenient disassembly and assembly, superior performance, stability and firmness, good shock resistance, water-proof, fireproof and anti-corrosion, and light weight. The house is a complete structure with a frame and walls inside

It is a stone wool composite board that can be migrated as a whole and has a service life of over 20 years.



案例分享



案例分享



案例分享



案例分享



Folding box room

折叠箱房

勘测、定制、施工、售后一体化服务体系

Integrated service system for survey, customization, construction, and after-sales

①折叠箱房：规格：5950mm*2950mm*2650mm；材质：石岩棉。

折叠箱房主要为房屋建筑、地铁、市政工程、铁路、公路等基建施工工地提供住人集装箱、折叠箱活动房、折叠箱房屋、箱式活动房，快拼箱房，箱房卫生间，可吊装箱房的设计、制造、运输、销售、等服务，并为施工工地提供岗亭、卫生间、铁床、空调等配套设备的销售服务。

公司生产的折叠箱房，箱式房主要特点有：

一、运输方便，尤其适合经常更换施工点的单位；

二、坚固耐用，全部由钢质组成，具有很强的抗震、抗变形能力；

三、密封性能好，严格的制造工艺使这种活动房具有很好水密性；

四、箱房基于标准钢材底盘之上，可以衍生出许多组合空间。如会议室、宿舍、厨房、卫生间等。标准的宽度在2950mm，高度2650mm，长度5950mm，也可定制其他尺寸。

五、拆装方便，性能优越，稳定牢固，防震性能好，防水防火防腐，重量轻。房屋为整体结构，内有框架，墙体为石岩棉复合板，可整体迁移，使用寿命可达20年以上等。

品种齐全 货源充足 做工精细 质优价廉

① Folding box room: specification: 5950mm*2950mm*2650mm; Material: Rock wool.

Folding box houses mainly provide residential containers, folding box activity rooms, and folding boxes for infrastructure construction sites such as housing construction, subways, municipal engineering, rail-ways, highways, etc

Design, manufacturing, transportation, sales, and other services for box houses, box type activity rooms, fast consolidation rooms, box room toilets, and lifting box rooms, and provide services for construction sites

Sales services for supporting equipment such as sentries, bathrooms, iron beds, air conditioning, etc.

The folding box houses produced by the company have the following main characteristics:

1、 Convenient transportation, especially suitable for units that frequently change construction sites;

2、 Durable and sturdy, all made of steel, with strong seismic and deformation resistance;

3、 The sealing performance is good, and the strict manufacturing process makes this activity room have good water tightness;

4、 The box house is based on a standard steel chassis and can derive many combination spaces. Such as meeting rooms, dormitories, kitchens, bathrooms, etc. The standard width is

2950mm, height 2650mm, length 5950mm, and other sizes can also be customized.

5、 Convenient disassembly and assembly, superior performance, stability and firmness, good shock resistance, waterproof, fireproof and anti-corrosion, and light weight. The house is a complete structure with a frame and walls inside

It is a stone wool composite board that can be migrated as a whole and has a service life of over 20 years.



案例分享





Folding packing box room

折叠打包箱房

勘测、定制、施工、售后一体化服务体系

Integrated service system for survey, customization, construction, and after-sales

①折叠打包箱房：规格：5800mm*2460mm*2510mm；材质：石岩棉。

折叠打包箱房主要为房屋建筑、地铁、市政工程、铁路、公路等基建施工工地提供住人集装箱、折叠箱活动房、折叠箱房屋、箱式活动房，快拼箱房，箱房卫生间，可吊装箱房的设计、制造、运输、销售、等服务，并为施工工地提供岗亭、卫生间、铁床、空调等配套设备的销售服务。

公司生产的折叠打包箱房，箱式房主要特点有：

- 一、运输方便，尤其适合经常更换施工点的单位；
- 二、坚固耐用，全部由钢质组成，具有很强的抗震、抗变形能力；
- 三、密封性能好，严格的制造工艺使这种活动房具有很好水密性；

四、箱房基于标准钢材底盘之上，可以衍生出许多组合空间。如会议室、宿舍、厨房、卫生间等。标准的宽度在2950mm，高度2650mm，长度5950mm，也可定制其他尺寸。

五、拆装方便，性能优越，稳定牢固，防震性能好，防水防火防腐，重量轻。房屋为整体结构，内有框架，墙体为石岩棉复合板，可整体迁移，使用寿命可达20年以上等。

品种齐全 货源充足 做工精细 质优价廉

Folding packing box room

① Folding packing box room: specification: 5800mm*2460mm*2510mm; Material: Rock wool.

Folding packing box room mainly provide residential containers, folding box activity rooms, and folding boxes for infrastructure construction sites such as housing construction, subways, municipal engineering, railways, highways, etc

Design, manufacturing, transportation, sales, and other services for box houses, box type activity rooms, fast consolidation rooms, box room toilets, and lifting box rooms, and provide services for construction sites

Sales services for supporting equipment such as sentries, bathrooms, iron beds, air conditioning, etc.

The Folding packing box room produced by the company have the following main characteristics:

- 1、 Convenient transportation, especially suitable for units that frequently change construction sites;
- 2、 Durable and sturdy, all made of steel, with strong seismic and deformation resistance;
- 3、 The sealing performance is good, and the strict manufacturing process makes this activity room have good water tightness;
- 4、 The box house is based on a standard steel chassis and can derive many combination spaces. Such as meeting rooms, dormitories, kitchens, bathrooms, etc. The standard width is

2950mm, height 2650mm, length 5950mm, and other sizes can also be customized.

5、 Convenient disassembly and assembly, superior performance, stability and firmness, good shock resistance, waterproof, fireproof and anti-corrosion, and light weight. The house is a complete structure with a frame and walls inside

It is a stone wool composite board that can be migrated as a whole and has a service life of over 20 years.







K-type temporary building

K式临建房

勘测、定制、施工、售后一体化服务体系

Integrated service system for survey, customization, construction, and after-sales

活动板房：规格①：3.64*5.62m；规格②：3.64*6.16m；规格③：3.64*7.44m；材质：岩棉。

活动板房宿舍，即住人板房，不但内部设施齐全，根据需要安装空调和不同数量的床位。高近3米，内部面积约22平方米；四壁装有隔热层；用阻燃材料制作，冬天不冷，夏天不热。其中设置了一门二窗。可设置床、办公桌、空调等。可躺、可坐、可看电视和上网。周围没有水源，可自行添置饮水机饮用桶装水；活动房宿舍适用于一些施工队或工作相对固定的工地施工人员。

优势：坚固耐用：全钢质材料，不需要地基结构组装，并且是可以抵御自然灾害的。

节能：即取即用，使用不产生任何作业垃圾；可以循环使用达20年以上，环保更节能；可重复利用。

灵活：可以用多个任意组合出不同形状、不同大小的员工宿舍、管理层办公室、临时会议室、宿舍、厨房、卫生间等，而且快速无比。

方便：活动房结构稳定，外型美观大方，拆卸简单。

主体材料用压型复合板制作，内夹岩棉，具有寿命长，耐腐蚀，隔热保温效果好，安装、拆迁方便，适合大型厂房，建设工程指挥部、项目经理部、市内建筑工地，办公、职工宿舍、伙房、餐厅、仓库、水泥库及大型工地的整体型生活区用房。

品种齐全 货源充足 做工精细 质优价廉

Activity board room: Specification ①: 3.64 * 5.62m; Specification ②: 3.64 * 6.16m; Specification ③: 3.64 * 7.44m; Material: Rock wool.

The activity board room dormitory, also known as the residential board room, not only has complete internal facilities, but also has air conditioning and different numbers of beds installed according to needs. Nearly 3 meters high, with an internal area of approximately

22 square meters; The walls are equipped with insulation layers; Made of flame-retardant materials, it is not cold in winter and not hot in summer. One door and two windows are installed. Can set up beds, desks

Air conditioning, etc. Can lie down, sit down, watch TV, and surf the internet. There is no water source around, so you can add a Water dispenser to drink bottled water; Activity rooms and dormitories are suitable for some construction purposes

Construction personnel on construction sites with relatively fixed teams or jobs.

Advantages: Durable and sturdy: Made of all steel materials, it does not require foundation structure assembly and can withstand natural disasters.

Energy saving: Ready to use, no operational waste generated during use; It can be recycled for more than 20 years, which is more environmentally friendly and energy-saving; Reusable.

Flexible: can be combined with multiple arbitrary shapes and sizes to create employee dormitories, management offices, temporary meeting rooms, dormitories, kitchens, and hygiene

Intermittent and incredibly fast.

Convenience: The activity room has a stable structure, beautiful and elegant appearance, and easy disassembly.

The main material is made of pressed composite plates, with stone wool sandwiched inside. It has a long service life, corrosion resistance, good insulation effect, convenient installation and demolition, and is suitable for large-scale use

Factory buildings, construction project command centers, project management departments, urban construction sites, offices, staff dormitories, kitchens, restaurants, warehouses, cement warehouses, and large-scale construction sites

Housing for living areas of different sizes.





案例分享



案例分享



案例分享

